



Company Profile

January 2014

Address: Ring road – ElKatamia – Sama El Qahera Project.

Building No. D16 – Flat No. 3 – 11439 - Cairo.

Tel. : (02) 23148034

Fax.: (02) 23148035

E-mail: info@intenso-eg.com

العنوان: الطريق الدائري – القطامية – مشروع سما القاهرة.

عمارة د ١٦ – شقة ٣ - 11439 - القاهرة.

تليفون: ٢٣١٤٨٠٣٤ (٠٢)

فاكس: ٢٣١٤٨٠٣٥ (٠٢)

البريد الإلكتروني: info@intenso-eg.com

Table of Contents

I. INTRODUCTION	3
II. COMPANY MAIN ACTIVITIES	4
1. ENGINEERING WORKS	4
2. TECHNICAL ASSISTANCE	5
3. CONTRACTING	6
4. MAINTENANCE	6
5. TRAINING	6
6. ELECTRONIC CIRCUITS	7
7. PANEL BUILDING	7
III. CONTACT INFORMATION	7

I. INTRODUCTION

INTENSO was established by a group of electrical engineers covering different branches like power, control, automation, instrumentation and electronics who have a long experience in the field of large scale contracting and achieved so many successful turnkey projects in many different fields including cement, oil and gas, water pumping stations, electricity generating stations, resorts, hotels and so many other fields as technical design staff, erection responsible, site managers, projects managers and head of projects managers so that the following activities complete the successful story by providing our customers with a different services in a different professional manners. Our main activities can be summarized as in Figure (1).

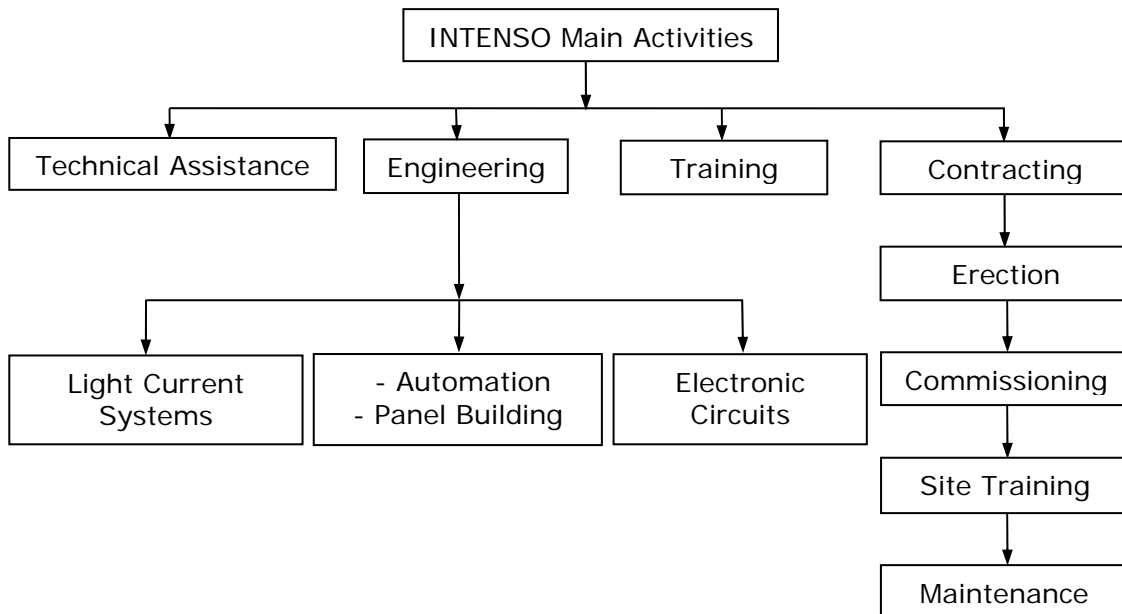


Figure (1) INTENSO Main Activities.

II. COMPANY MAIN ACTIVITIES

1. ENGINEERING WORKS

Our engineering work covers the complete engineering studies for new systems/installations and revamping or upgrading for the existing industrial systems.

- Low voltage switchboards.
 - Low Voltage Distribution Board LVDB.
 - Motor Control Center MCC.

- Automation Systems [PLC, DCS].
 - ABB Industrial IT - AC800F and Digivis Operator Station.
 - ABB Industrial IT - AC800F and Tenore Operator Station.
 - ABB Industrial IT - AC800M and Portal A Operator Station.
 - SIEMENS Simatic S5, S7, PCS7.
 - GE-Fanuc.

- Earthing system.
- Lightning system (Conventional – early Streamer Emission).
- Fire alarm system.
- Lighting system.
- Clock system (Centralized system synchronized with GPS).
- Public address system.
- Telephone and paging systems.
- CCTV system.
- UPS emergency supply system.

Basic Engineering for the following aspects:

- Electrical coordination.
- Flowsheet with instrumentation.
- Instrumentation list.
- Electrical load list (packages).
- Listing of electrical motors and its loads.
- Unit circuit diagrams typical drawings.
- Motor drives basic demands.
- One line diagram / single line diagram (basic).

- Sub-Station layout arrangement and basic requirements for civil design.
- General layout of cable routing (from stations using tunnel, conduit banks).

Detailed Engineering Studies for the following aspects:

- PLC marshalling panels design.
- Digital & analog junction boxes signal arrangement.
- Digital & analog junction boxes location identification and selection.
- Instrumentation interface.
- Automation packages interface.
- Motor control center interface.
- Auxiliary Control Center ACC for control voltage distribution (normal/UPS).
- UPS emergency load list and power demand calculation.
- I/O list.
- Automation network configuration and hardware selection.
- Graphic pages design for Process and system diagnostics.
- Calculation notes.
- Shop drawings for erection work.
- Guidance for erection works for all the above mentioned systems.
- Test sheets for commissioning works.
- Factory Acceptance Test **FAT** procedures and certificate papers for preliminary handling over.
- Site Acceptance Test **SAT** procedures and certificate papers for final handling over.
- Performance test.
- As built documentations.

2. TECHNICAL ASSISTANCE

1. Quantity survey for projects in preliminary engineering phase.
2. Tender preparation.
3. Tender evaluation (assessment) for work which is done by others.
4. Works follow up including coordination meetings for the following activities (engineering – erection – commissioning & startup) for work which is done by others.

3. CONTRACTING

INTENSO has the ability to cover all the scope of engineering works mentioned above for all site activities like installation, erection, commissioning and startup as a turnkey job.

INTENSO also accept to make all the site works which are designed by others.

4. MAINTENANCE

INTENSO provide technical advice and supervise the implementation of predictive, preventive, corrective, modification and major shutdown maintenance programs. Establish requirements for major repairs or replacement of spare parts. Participates in the planning and implementation of all systems installation commissioning, modifications and expansion. Ensure all activities are carried out in a safe, timely efficient and cost effective manner.

- Supply for manpower to assist only during the planed shutdown maintenance.
- Take the responsibility for operation and maintenance for non process packages like utilities [lighting- drinking water – waste water – diesel generator - ...] using individual service contracts.
- Power protection circuits testing using current injector.
- Instrumentation calibration.
- Earthing network measurement and reinforcement.

Maintenance management software packages for:

- Inventory control.
- Machine history card.
- Material stock movement control.
- Job request.
- Preventive maintenance procedures and forms.
- Maintenance and shutdown schedule programs.

5. TRAINING

- We offer on site and office training according to client request.
- Engineering level and technician level training for maintenance.
- Operators level training for process operation and control.

List of available main subjects for training:

- Automation systems.
- Control systems interface.
- Instrumentation.
- Power Distribution.

For all courses we have the following materials:

- Course materials.
- Hardware support materials.
- Software support materials.
- Certificate.

6. ELECTRONIC CIRCUITS

▪ **Design**

INTENSO offers design for Printed Circuit Boards PCB for different applications according to client request. USING Computer Aided Design CAD software packages/tools for PCB layout design.

▪ **Prototype**

Circuit implementation, assembly, testing and casing.

▪ **Maintenance and repair**

Also INTENSO have the experience to do maintenance and circuit repair for printed circuit boards.

▪ **Our current industrial products**

- 1- Bag filter sequential controller card (Digital Design).
- 2- Automatic battery charger (Analog Design).
- 3- Speed monitor controller (Mixed Analog/Digital Design).
- 4- Programmable counter micro-controller based (Mixed Analog/Digital Design).
- 5- MCC interface card (Digital Design).



7. PANEL BUILDING

INTENSO has the ability to build its design or client design using local or imported panels and boxes at our workshop in 10th of Ramadan:

- LVDB Low Voltage Distribution Board.
- MCC Motor Control Center.
- ACC Auxiliary Control Center.
- MPA Marshalling Panel Analog.
- MPD Marshalling Panel Digital.
- JCB Junction Control Box.
- IP Interface Panel.

III. CONTACT INFORMATION

Address	: Ring road – ElKatamia – Sama El Qahera Project, Building No. D16 – Flat No. 3, Cairo, Egypt.
Postal Code	: 11439 – Cairo.
Tel. / Fax.	: (02) 23148034 / (02) 23148035
Mobile	: 01227819961 01000479987 01000479986
Email	: info@intenso-eg.com